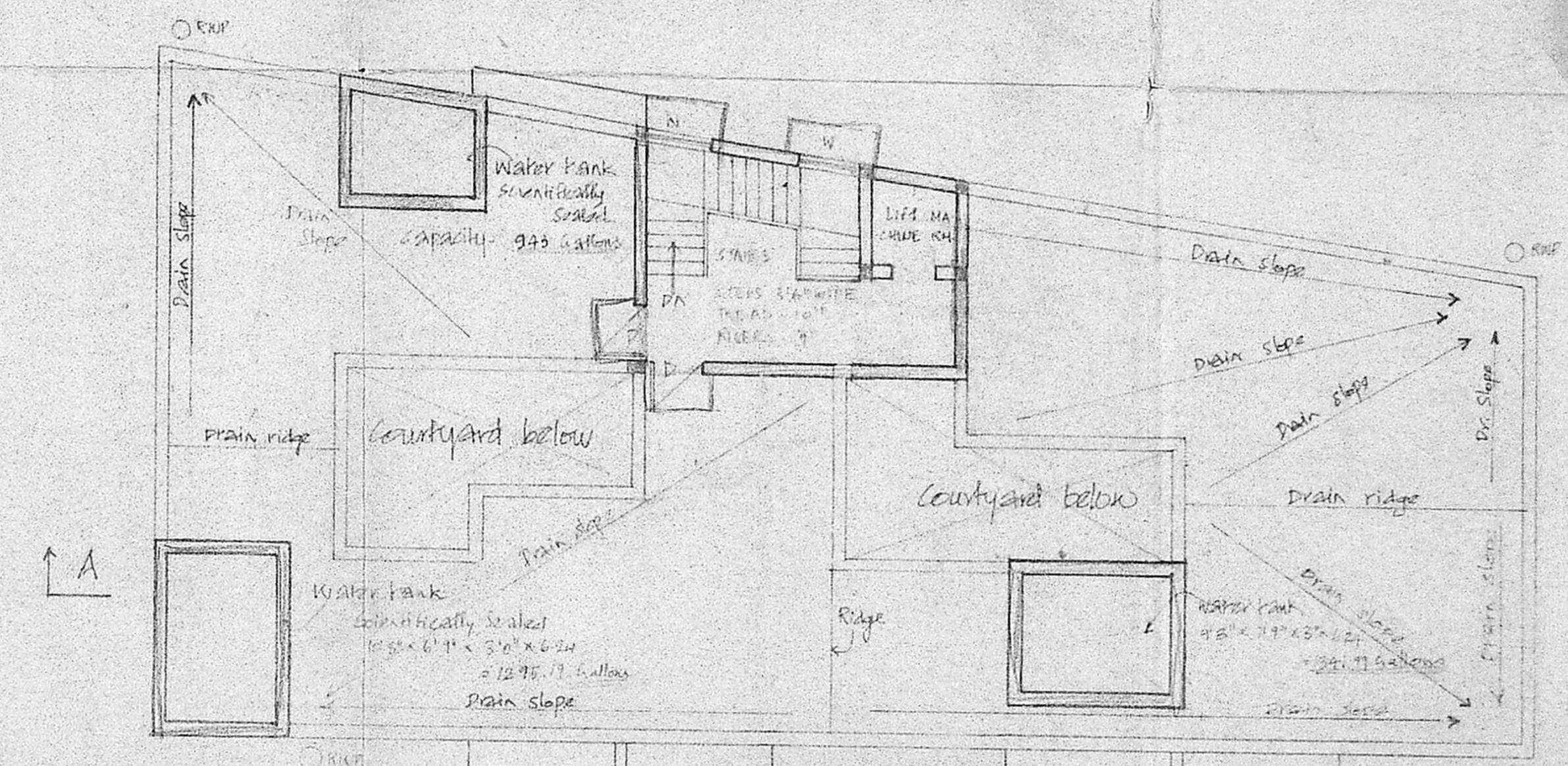
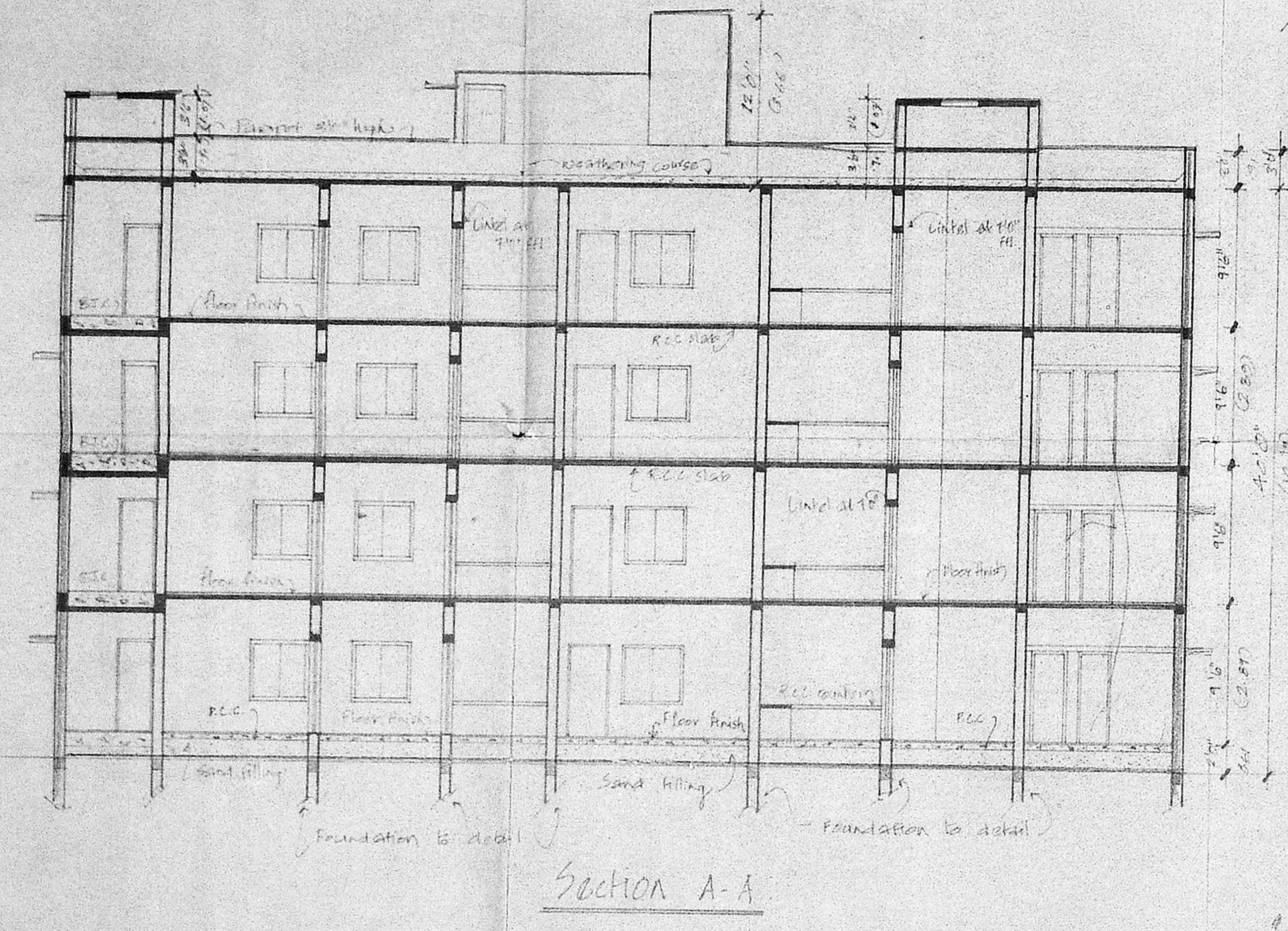
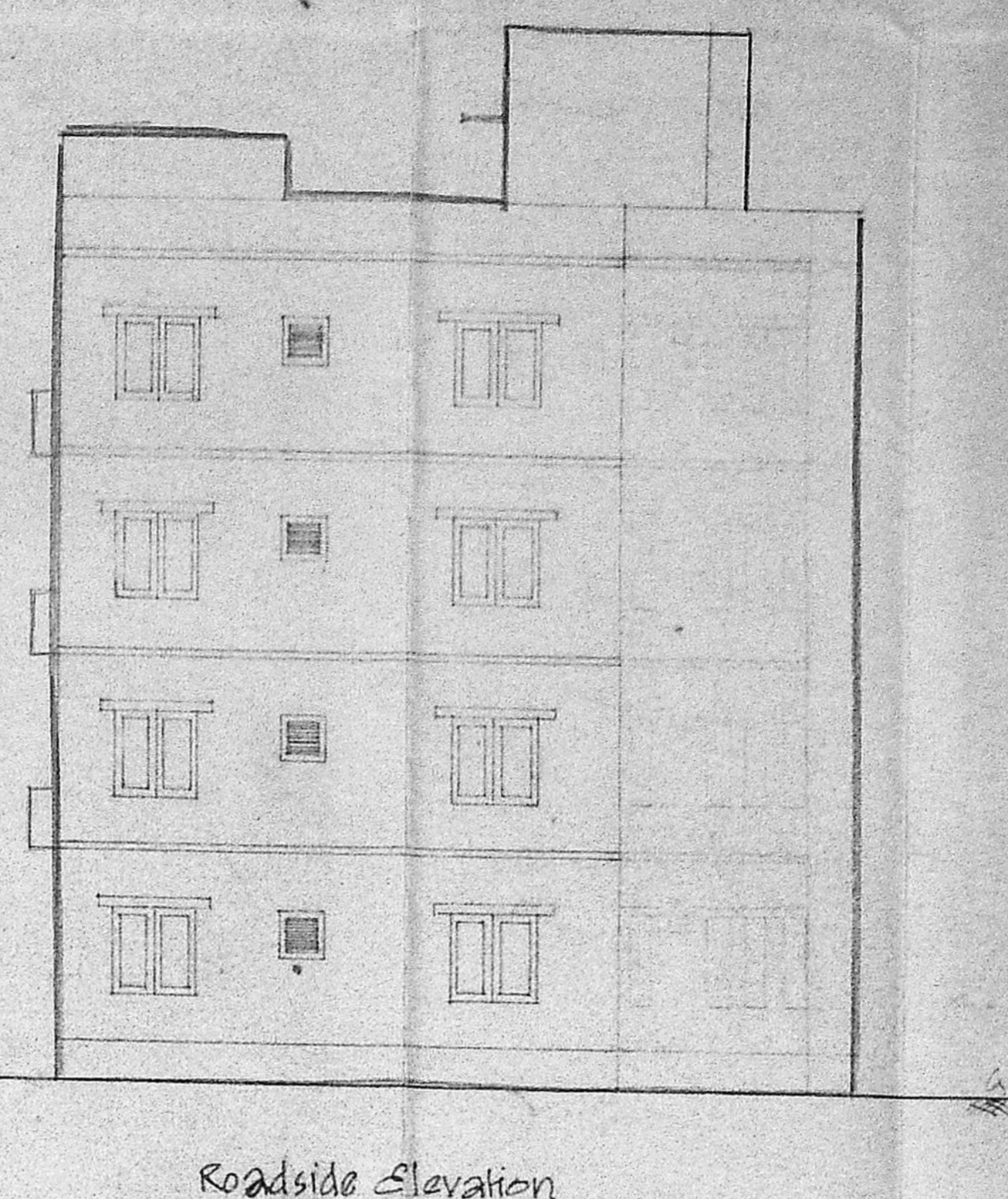
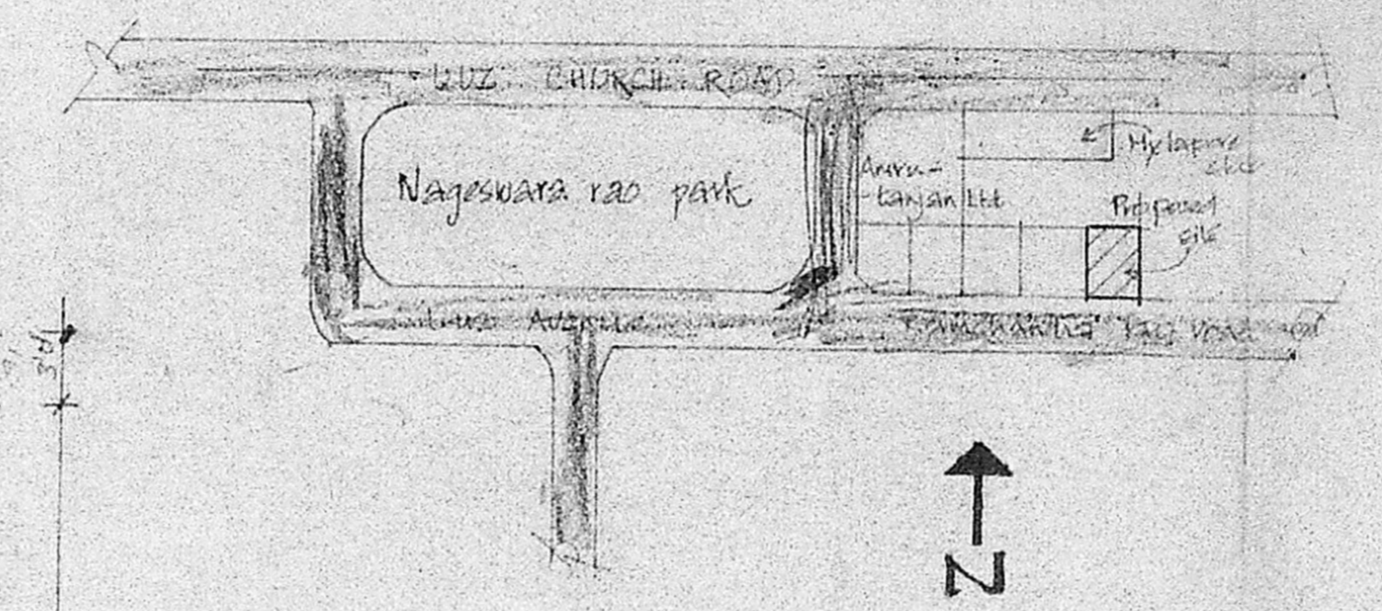
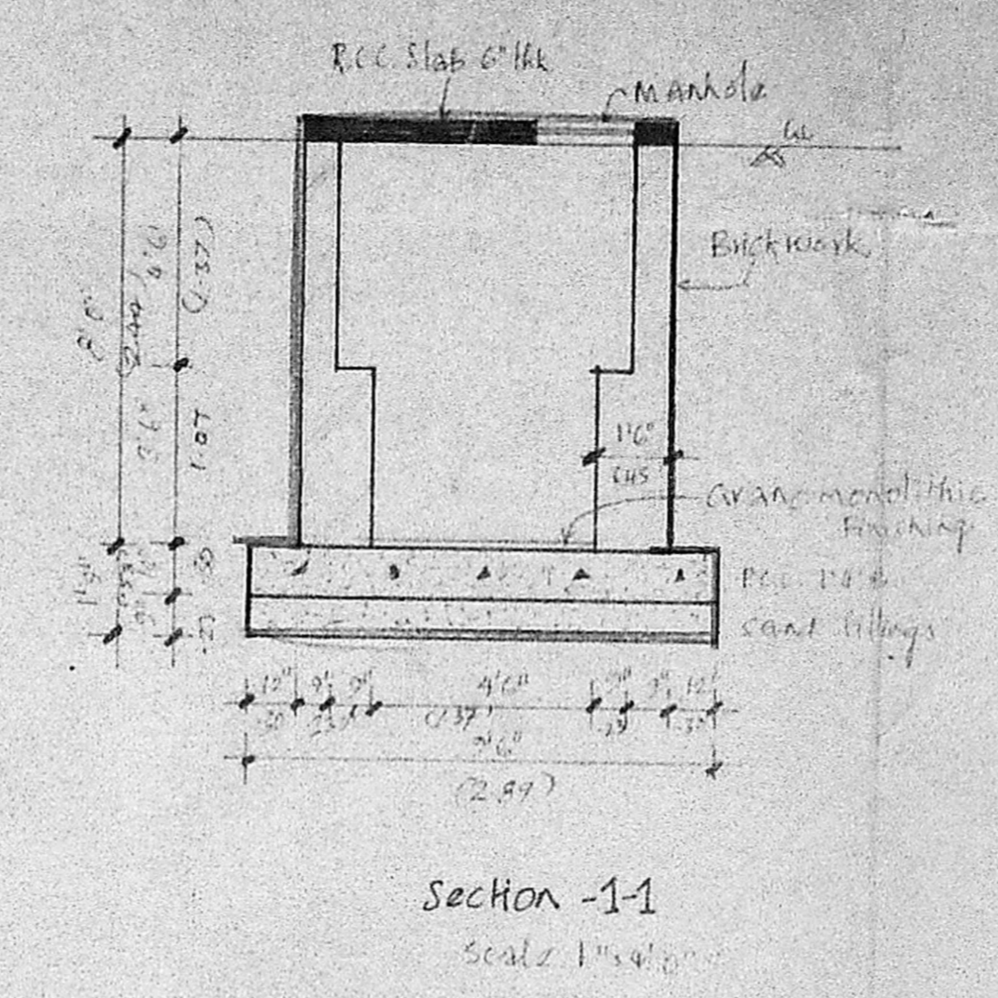
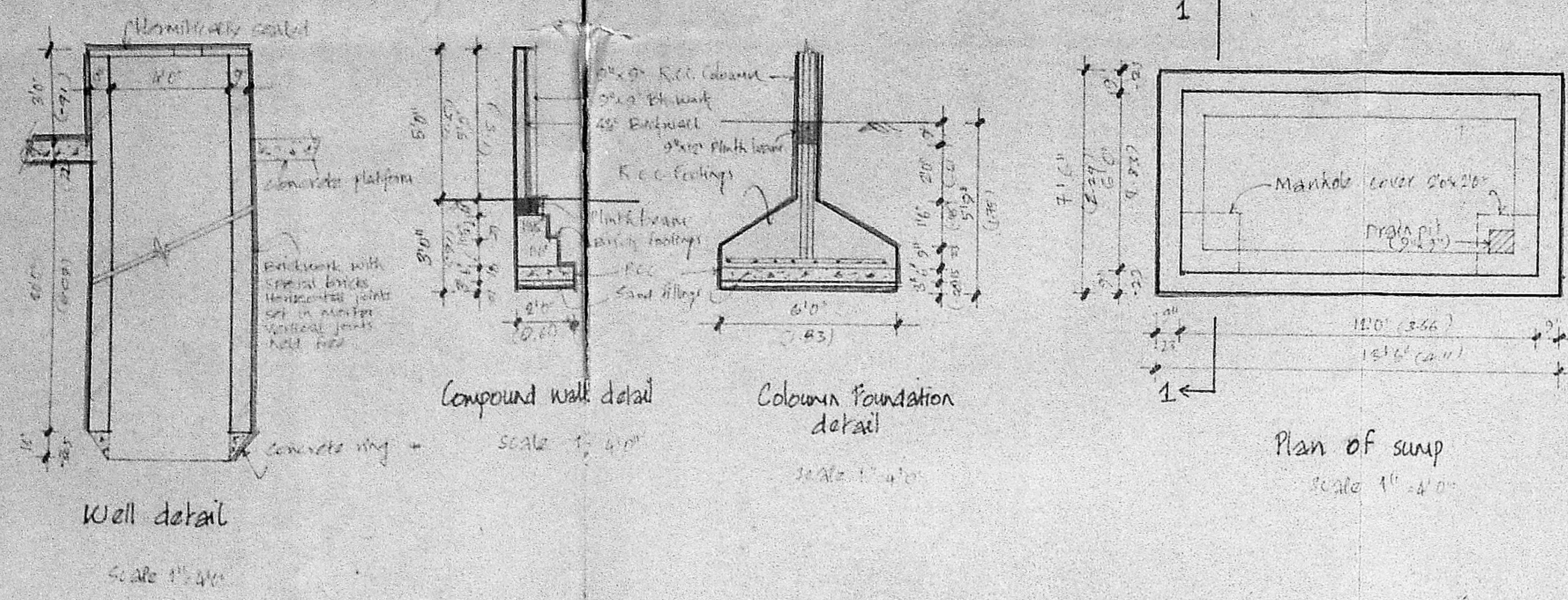


Schedule of joineries

ED	Entrance door	2'6" x 2'6"
D	Door	3'0" x 7'0"
D1	Door	2'6" x 7'0"
W	Window	4'6" x 6'6"
W1	Window	4'6" x 3'6"
W2	Window	4'6" x 4'6"
W3	Window	4'6" x 4'6"
W4	Window	4'6" x 4'6"
W5	Window	4'6" x 4'6"
W6	Window	4'6" x 4'6"
W7	Window	4'6" x 4'6"
W8	Window	4'6" x 4'6"
W9	Window	4'6" x 4'6"
W10	Window	4'6" x 4'6"
W11	Window	4'6" x 4'6"
W12	Window	4'6" x 4'6"
W13	Window	4'6" x 4'6"
W14	Window	4'6" x 4'6"
W15	Window	4'6" x 4'6"
W16	Window	4'6" x 4'6"
W17	Window	4'6" x 4'6"
W18	Window	4'6" x 4'6"
W19	Window	4'6" x 4'6"
W20	Window	4'6" x 4'6"
W21	Window	4'6" x 4'6"
W22	Window	4'6" x 4'6"
W23	Window	4'6" x 4'6"
W24	Window	4'6" x 4'6"
W25	Window	4'6" x 4'6"
W26	Window	4'6" x 4'6"
W27	Window	4'6" x 4'6"
W28	Window	4'6" x 4'6"
W29	Window	4'6" x 4'6"
W30	Window	4'6" x 4'6"
W31	Window	4'6" x 4'6"
W32	Window	4'6" x 4'6"
W33	Window	4'6" x 4'6"
W34	Window	4'6" x 4'6"
W35	Window	4'6" x 4'6"
W36	Window	4'6" x 4'6"
W37	Window	4'6" x 4'6"
W38	Window	4'6" x 4'6"
W39	Window	4'6" x 4'6"
W40	Window	4'6" x 4'6"
W41	Window	4'6" x 4'6"
W42	Window	4'6" x 4'6"
W43	Window	4'6" x 4'6"
W44	Window	4'6" x 4'6"
W45	Window	4'6" x 4'6"
W46	Window	4'6" x 4'6"
W47	Window	4'6" x 4'6"
W48	Window	4'6" x 4'6"
W49	Window	4'6" x 4'6"
W50	Window	4'6" x 4'6"
W51	Window	4'6" x 4'6"
W52	Window	4'6" x 4'6"
W53	Window	4'6" x 4'6"
W54	Window	4'6" x 4'6"
W55	Window	4'6" x 4'6"
W56	Window	4'6" x 4'6"
W57	Window	4'6" x 4'6"
W58	Window	4'6" x 4'6"
W59	Window	4'6" x 4'6"
W60	Window	4'6" x 4'6"
W61	Window	4'6" x 4'6"
W62	Window	4'6" x 4'6"
W63	Window	4'6" x 4'6"
W64	Window	4'6" x 4'6"
W65	Window	4'6" x 4'6"
W66	Window	4'6" x 4'6"
W67	Window	4'6" x 4'6"
W68	Window	4'6" x 4'6"
W69	Window	4'6" x 4'6"
W70	Window	4'6" x 4'6"
W71	Window	4'6" x 4'6"
W72	Window	4'6" x 4'6"
W73	Window	4'6" x 4'6"
W74	Window	4'6" x 4'6"
W75	Window	4'6" x 4'6"
W76	Window	4'6" x 4'6"
W77	Window	4'6" x 4'6"
W78	Window	4'6" x 4'6"
W79	Window	4'6" x 4'6"
W80	Window	4'6" x 4'6"
W81	Window	4'6" x 4'6"
W82	Window	4'6" x 4'6"
W83	Window	4'6" x 4'6"
W84	Window	4'6" x 4'6"
W85	Window	4'6" x 4'6"
W86	Window	4'6" x 4'6"
W87	Window	4'6" x 4'6"
W88	Window	4'6" x 4'6"
W89	Window	4'6" x 4'6"
W90	Window	4'6" x 4'6"
W91	Window	4'6" x 4'6"
W92	Window	4'6" x 4'6"
W93	Window	4'6" x 4'6"
W94	Window	4'6" x 4'6"
W95	Window	4'6" x 4'6"
W96	Window	4'6" x 4'6"
W97	Window	4'6" x 4'6"
W98	Window	4'6" x 4'6"
W99	Window	4'6" x 4'6"
W100	Window	4'6" x 4'6"



Area statement

Area	SFT	SQM
PLOT AREA	7261	6746
GROUND FLOOR	2672.28	2467.46
FIRST FLOOR	2372.63	2197.14
SECOND FLOOR	2111.45	1947.24
THIRD FLOOR	1932.65	1781.74
TOTAL BUILDING AREA	12089.01	11233.58

Legend

- Proposed Road
- PCT Boundary
- Section line

Surveyor
V.S. NATARAJ MARCEL
Architect, Licensed Surveyor
Class II, No. 385 3rd Fl
62 C.P. RAMASWAMY ROAD
MADRAS-14, P.H. 627468

Licensed Surveyor
V.S. NATARAJ MARCEL

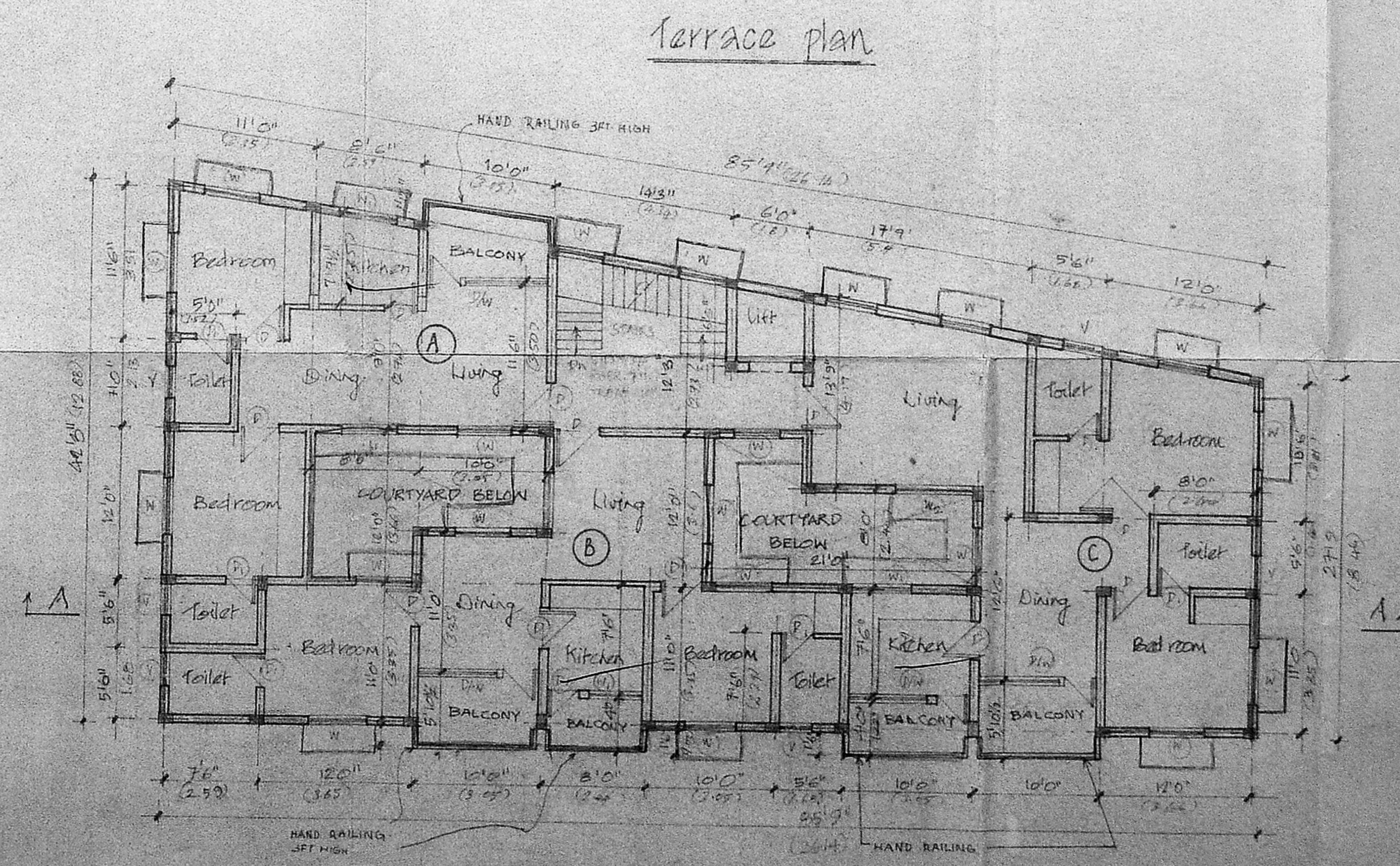
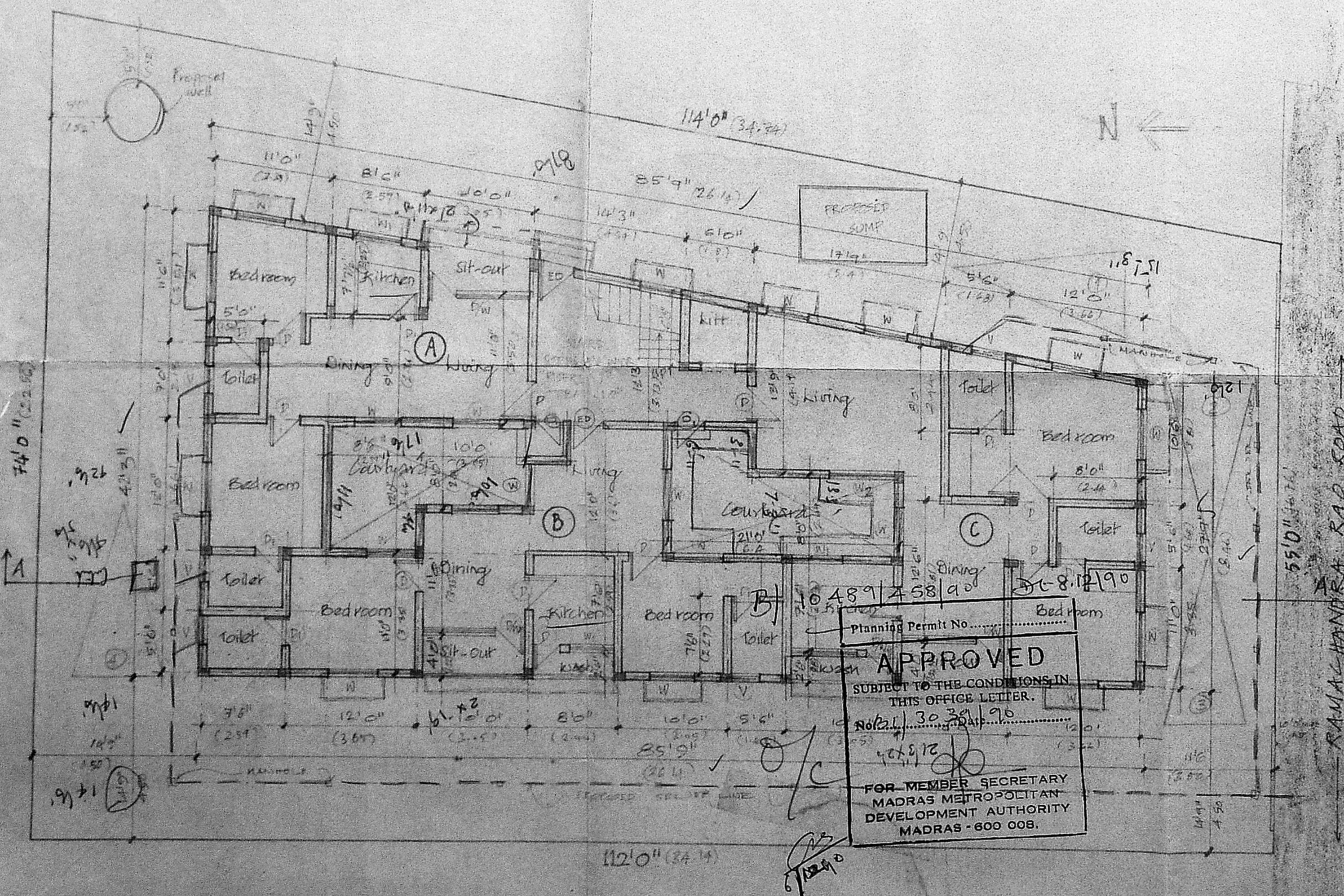
Nataraj & Venkar Architects
62, C.P. Ramaswamy Road,
Alwarpet, Madras 16.

Approved
Proposed Apartments at
Door No. 6, Ramachandrarao
Road, Off. Luz Church
Road, Mylapore, Madras-17.
R.S. No. 3334/1. DIV No. 126.

MMDA (B)/PP NC
C.No. 111/3334/1/10

Corporation Drawing
PART II

Scale
1/4" = 1'-0"



APPROVED
SUBJECT TO THE CONDITIONS IN
THIS OFFICE LETTER.
NOTED: 30.3.1960
FOR MEMBER SECRETARY
MADRAS METROPOLITAN
DEVELOPMENT AUTHORITY
MADRAS-600 008.